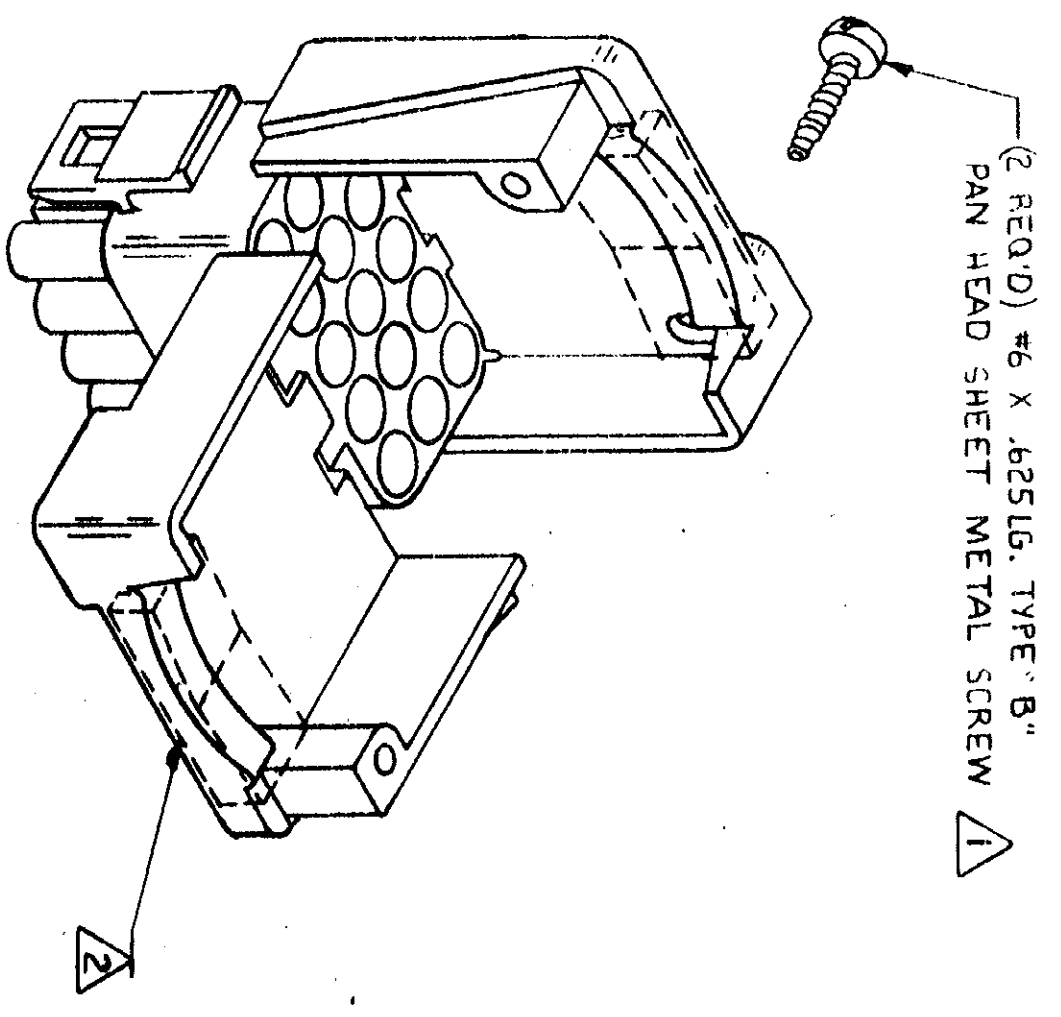
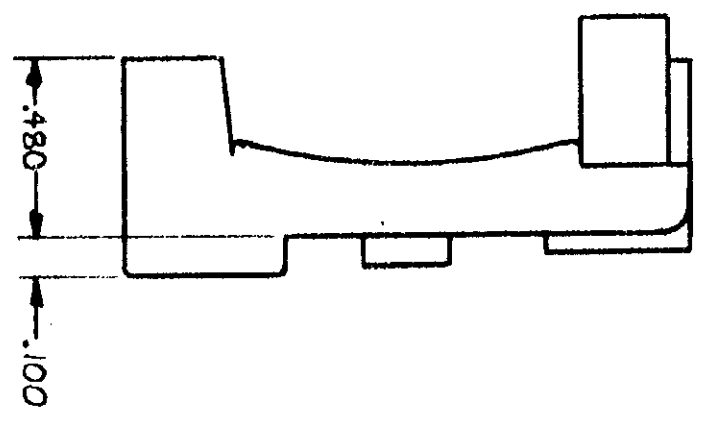
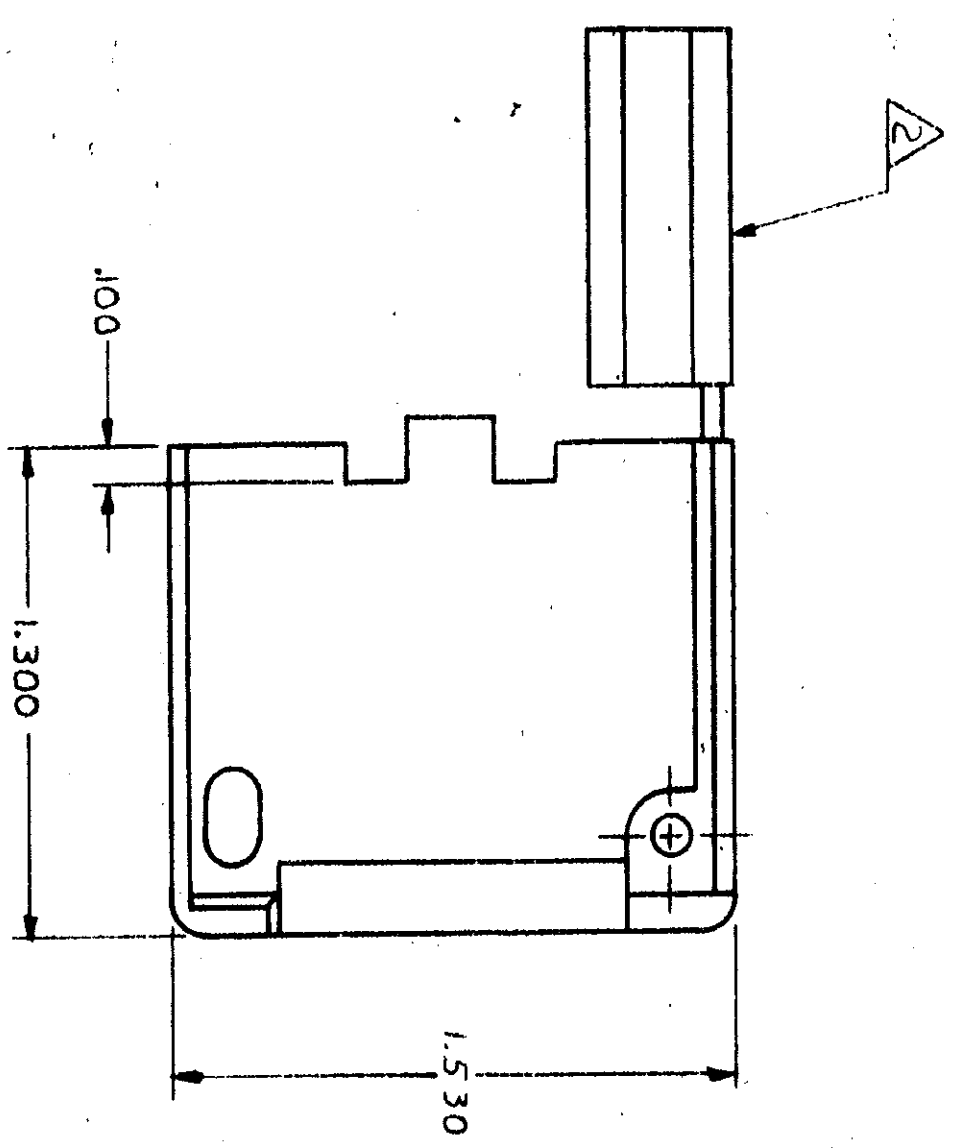
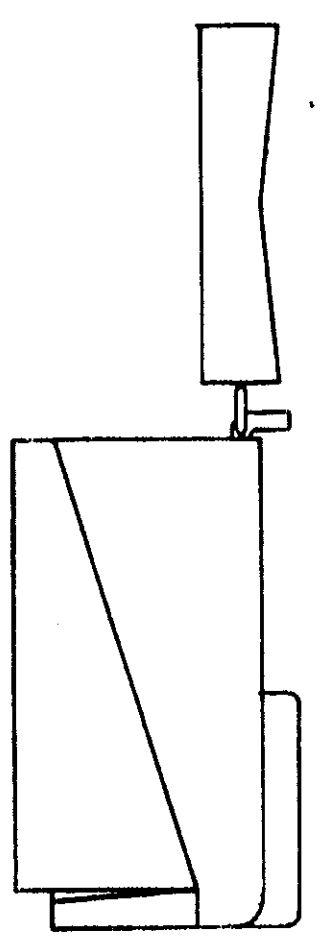


© COPYRIGHT 1978 BY AMP INCORPORATED, HARRISBURG, PA. ALL INTERNATIONAL RIGHTS RESERVED. AMP INCORPORATED PRODUCTS COVERED BY U. S. AND FOREIGN PATENTS AND/OR PATENTS PENDING.

- 1 SHEET METAL SCREWS NOT SUPPLIED.
- 2 INSERT IS ATTACHED TO STRAIN RELIEF AS AN ADDITIONAL ADJUSTMENT FOR SMALL WIRE BUNDLES; IT SHOULD BE CUT OFF AND POSITIONED AS SHOWN BY DOTTED LINES.
- 3 TWO REQUIRED PER CONNECTOR.
- 4 DETACHABLE INSERT MAY SEPARATE FROM STRAIN RELIEF BODY DURING SHIPPING.

REVISIONS		DATE	APPROVED
P	F ZONE LTR	3-12-79	MSE/AM
A	REVISED AND REDRAWN PER M-5186	6-28-80	ST/RS
AI	RESTORATION	12/1/81	10/RS
B	REV PER ECN CM 705		



WIRE BUNDLE DIA	
WITHOUT INSERT	.950 MAX
WITH INSERT	.200 MIN

UNLESS OTHERWISE SPECIFIED DIMENSIONS ARE IN INCHES. TOLERANCES ON: DECIMALS ± .015 ANGLES		CONTRACT NO.	
MATERIAL		DR 3-12-79	
FINISH		CHK D. FEHER	
SEE TABLE		APPD J.S. Haida 3/22/79	
SEE TABLE		APPD J.C. [Signature] 3-22-79	
SEE TABLE		DSGN APPD	
SEE TABLE		OTHER APPD	
NAME		MATERIAL	
STRAIN RELIEF FOR 15 CIRCUIT		NYLON 94V-2	
UNIVERSAL MATE-N-LOK™ CONNECTOR		1-640724-0/3	
SIZE CODE IDENT NO/DRAWING NO		PART NO	
C 00779		640724	
SCALE 2-1		SHEET 1 OF 1	